

Light-guided Vocal Fold Injection

solmedix™

Lightin[®]

www.solmedix.com

*"Lightin provides a solution
for precise injection on the intended location"*



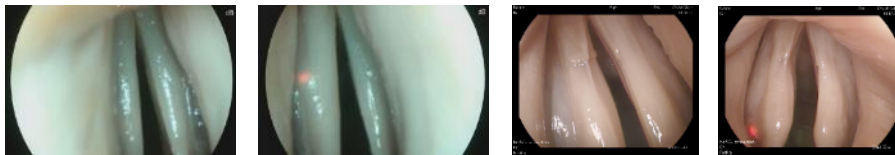
Solmedix Co., Ltd.
Solution of Medical Device for Innovative Exi™

Lightin[®] Benefits

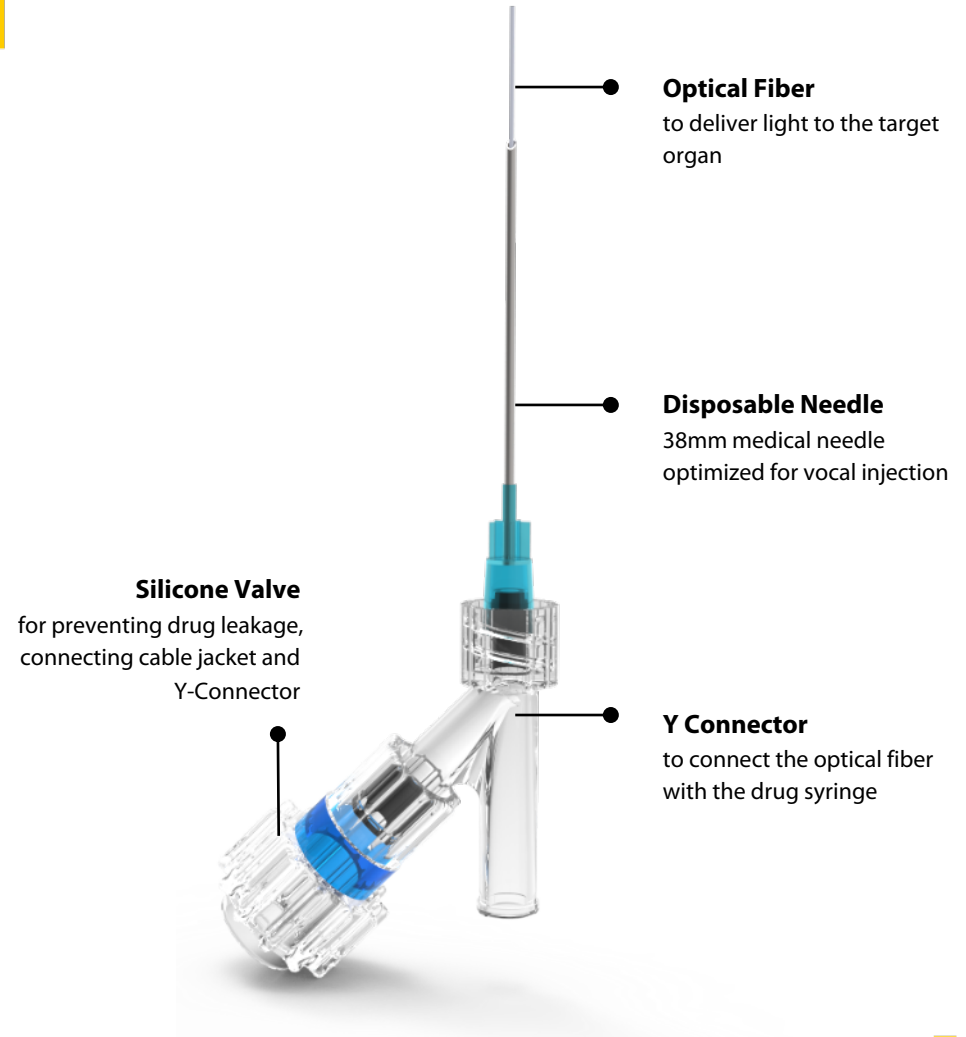


Lightin[®] Features

Real-time light-guided vocal fold injection might be a feasible and promising technique for treatment of vocal fold pathology. It is expected that this technique with Lightin[®] could improve the precision of vocal fold injection and expand its indication in laryngology.



The lighted needle is introduced into patient vocal folds via a submucosal pathway. The red light at the needle tip could be seen in the vocal folds without difficulty.



Lightin[®]

Lightin[®]



Lightin[®] Generator



A single optic fiber was inserted in a needle. A led light module is used as the light source. The needle tip is accurately localized, and the depth from the mucosa could be estimated by the brightness and size of the redlight spot.

Product	Spec.	Ref. Number
Lightin [®]	23G×38mm×500mm	LI-23G-50
	23G×38mm×500mm	LI-23G-150
	25G×38mm×1500mm	LI-25G-50
	25G×38mm×1500mm	LI-25G-150

Lightin® Ordering Information



Product	Spec.	Ref. Number	Qty.
Lightin®	Needle: 23G × 38mm Fiber length: 500mm	LI-23G-50	1 EA
	Needle: 23G × 38mm Fiber length: 1500mm	LI-23G-150	1 EA
	Needle: 25G × 38mm Fiber length: 500mm	LI-25G-50	1 EA
	Needle: 25G × 38mm Fiber length: 1500mm	LI-25G-150	1 EA
Lightin® Generator	1.0A / 300 × 100 × 200 mm	LIG-01	1 EA

solmedix™

#721, 330 Seongam-ro, Mapo-gu, Seoul,
03920, Rep. of Korea

T / +82-2-717-7852
M / +82-10-5596-0572
E / support@solmedix.com

www.solmedix.com



Distributor

This device is to be used by or on the order of a physician. Lightin® are trademarks of Solmedix Co., Ltd. © 2019 Solmedix Co., Ltd. All rights reserved. Korea and International patents registration. The Lightin® devices are classified by the KFDA.